



A SENSE OF PLACE

EXHIBITORS BROCHURE

OCT25:JAN17

O Y E Z
A R T S

CELEBRATING NEW BEGINNINGS IN ALTRINCHAM TOWN HALL

PETER JAMES HOUGHTON



Peter is a self-taught artist from Lancashire. His interest in psycho-geography within the urban landscape stems from a childhood witnessing the slow decline of the functional working-class towns surrounding him. This distant memory has informed his acrylic paintings of urban life told through empty buildings that stand silently in their atrophy on the periphery of regeneration, held in stasis in a nostalgic haze, or as unsettling backdrops to dreams about our hometowns.

STRETFORD UNDERPASS

Acrylic
20 x 20cm
£195

STOCKPORT MERSEYWAY NCP

Acrylic
21x29cm
£160

DANTZIC BIN

Acrylic
17.5 x 17.5cm
£100

JOHN SOTORRIO



John is a local artist with a background in photography and fine art.

Specialising in figurative painting John finds inspiration from his surroundings. Working from life and photographic images, his aim is to create works that are ambiguous and thought provoking.



PLAZA DE LA ESPERANZA

Oil on board
21"x26"
display only

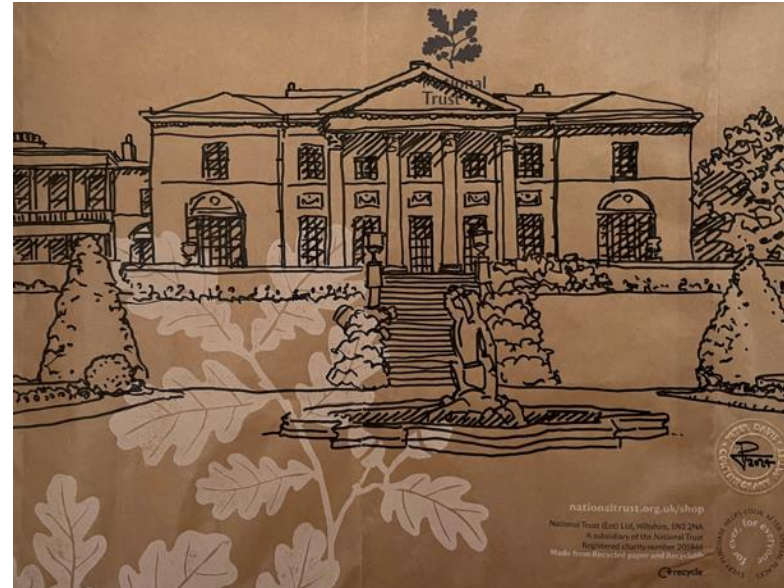
THE SEAGULL

Oil on board
18"x22"
£395

THE ROAD

Oil on board
21"x26"
£395

PETER DAVIS



Peter Davis MAFA is a prize-winning local artist and member of the Manchester Academy of Fine Arts. His work is held in both public and private collections. He began his eco-friendly series of urban sketches on upcycled paper shopping bags when he noticed ‘Please Recycle Me’ on them. These are now proving very popular and have earned the nickname, “bagsy” drawings. These two original ink sketches have been created especially for A SENSE OF PLACE exhibition and are of Tatton Hall and Nether Alderley Mill. They have been drawn on reclaimed merchandise bags from the National Trust shop.

NETHER ALDERLEY MILL ON NATIONAL TRUST BAG

Ink on paper bag
30x42cm
(framed)
£175

TATTON HALL ON NATIONAL TRUST BAG

Ink on paper bag
30x42cm
(framed)
£175

ROY BEST



SELF PORTRAIT IN ABSENTIA
 One of a series of drawings depicting myself not directly but rather through the impression that I make on my environment as I move around my home. We all interact with and impact upon the places we inhabit all the time which influences our sense of place. In this particular case I have just risen from bed to make breakfast.



UNDER BURDOCK WAY .
 All the typical elements of a picturesque Calderdale landscape are present - the hills, trees, greenery, bridges - but this view - that I regularly pass on my walk to the art studios at Dean Clough in Halifax - subverts such stereotypes with a dose of truth represented by some equally picturesque fly-tipping..

SELF PORTRAIT IN ABSENTIA
 Ink on paper (framed)
 34x46
 £210.00

UNDER BURDOCK WAY
 Ink on Paper (framed)
 46cm x 34cm
 £265.

MARIA DEDIU



Romanian artist Maria depicts the places that connect her emotionally..

The view from her grandmother's home and Barcelona.

Maria is studying classical guitar at RNCM.

BARCELONA
acrylic on Board
45x30
display only

ROMANIA
acrylic on Board
30x17
display only

:

BRENDA HIRD



I am primarily an abstract Landscape artist .
I find inspiration in the beautiful countryside
and beaches both here in Britain and
abroad .

I studied Fine art and Art History at
Manchester Metropolitan University in the
1980s and obtained a Ba (hons).
Since retirement in 2016 I have
concentrated on painting and drawing and
exhibiting both in the North-West and
further afield

I also run a life drawing group in Eccles
Manchester and have an extensive portfolio
of life drawings .

I was chosen for the TV programme Drawers
Off in 2022 .

**SUMMER FLOWERS ON A BLUSTERY HILLSIDE
OVERLOOKING THE BEACH**

20"x20"

Acrylic on canvas

£350

SUSANNA VOSPER

COTTONOPOLIS – THIS IS THE PLACE

Display only

I came to Manchester as a student in 1992 and never moved away. Over the last 30 plus years I've developed a deep bond for this place.

This textile piece celebrates what I love and hold dear about Manchester with all its many layers – its rich musical, cultural, political and industrial past and present, its architecture and interesting places to hang out, as well as what it stands for – diversity, acceptance, innovation, imperfection and swagger.

Inspired by Tony Walsh's poem "This is The Place" to quote Tony,
"Some are born here, some drawn here, but we all call it home".

Extract from This is The Place c Tony Walsh 2012. Commissioned by Forever Manchester. Used with kind permission.

Thanks to Jenny McCarthy for sewing the banner and to Ned Skelton for original photography.



SUSANNA VOSPER



WOMAM IN TIME, PLACE & SPACE

This body of work explores the themes of maturation and ageing, being worn and renewal; urban versus nature; personal versus universal; ordinary versus unique, through my female identity.

The work aims to communicate these themes visually through the use of old & modern photography; emulsion transfer and cyanotype transfer prints; cement fondu cast objects; voice extracts and slides as well as diary extracts and reflections.

"When I first came to Manchester it had an edge. I moved from the home counties to this gritty Northern city with a strong industrial past. It was completely novel and exciting."

Every one of us has a narrative about our lives and our lived experiences - who we love what we dream of, what we fear and what happens to us. Our lives are made up of lots of different elements which overlap and connect in different ways.

This artwork is about charting and integrating these key happenings in my life through a visual narrative starting from my early adult life when I moved to the Northwest aged 19 spanning 3 decades to my age now of 50. It therefore draws on time (key moments or periods in my life; place (key places in the city) and space (my internal reflections).

One of the final outcomes is a dress sharing these important personal memories which chart my life events (leaving home; meeting my life partner; having children and so) which are both universal and individual and which I hope, resonate with the audience. As such, the dress embodies how we all hold and carry our memories with us as part of our physical selves throughout

MATT WORDEN



In a turbulent world my home in south Manchester is a haven and a creative space in which to live and work. This pair of paintings are about that: home, warmth and creativity. The chairs are in my front living room where I sit with my partner having a brew and talking about our creative endeavours, Sam as a writer and me as a painter. They started life as demonstration pieces for a regular virtual art session that I started in lockdown and were taken to conclusion in my home studio.

A ROOM WITH A BREW 1
Acrylic on Paper
53x73cm
£ 250

A ROOM WITH A BREW 2
Acrylic on Paper
53x73cm
£ 250

NOMADIC NUBBINS

Nomadic Nubbins loves playing with paints, being creative and the childish joy that making art brings to his life. He embraces making art which is full of imperfections as they lead to unexpected surprises, exciting developments and strange ideas he could never have thought of.

His work acts as a contemporary cave painting, a playfully abstracted portrait of moments in time to be remembered, life ambitions to be lived and the general nonsense that pops into his head, making him laugh at how absolutely absurd his brain is!

The one ambition Nomadic Nubbins holds for his art is that it spreads positivity into the world. If he can deliver a smile to brighten someone's grey day, improve someone's situation by aiding a worthy cause or just bring a bit of joy to the world, he knows his creations are doing their job.



**THE WARM WELL KNOWNS OF WHERE SUNSET
FLOWERS AND YESTERDAYS ARE GROWN**

21x30cm
£220

A SUN SONG OF RISING TIME

20x20cm
£160

SUNFLOWER & THE DREAM

21 x 30cm
£220

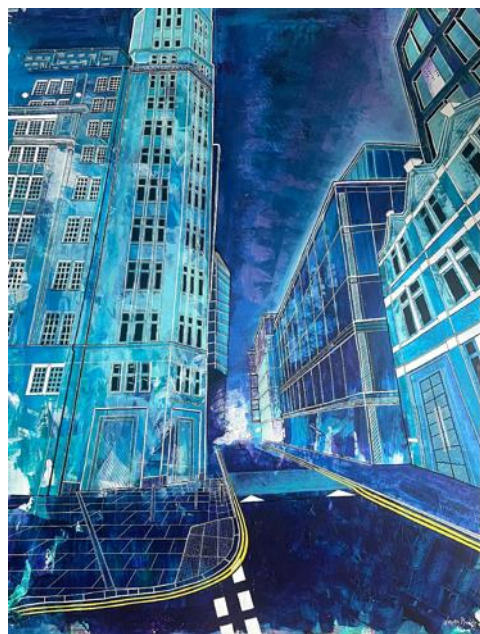
**MIDFALL MEMORABLE MEMORIES OF MEANDERING
MERRY MEADOWS**

20x20cm
£160

SUNG SONGS OF SKY AND BLOOM

20x20cm
£350

LAUREN BAILES



Inspired by buildings, and the emotional connection we have to them, whether we are conscious of it or not. A glance down a side street, looking up past traffic lights, or our daily travel past buildings on the tram. Each day we interact with the city's streets, roads and buildings, we are collecting memories as we go. We each have our own playlist of moments we can recall whilst within the city and its architecture. They conjure up a spectrum of emotions for us. Some good, some bad and some incredible. The link between emotion and place is what connects us to where we live and gives us a sense of belonging. I am intrigued by this thought, and so want to show you my own 'quick glance' and my emotional connection to this wonderful city we call Manchester.

SUNLIGHT HOUSE

Limited edition print on canvas
94 x79cm
£350

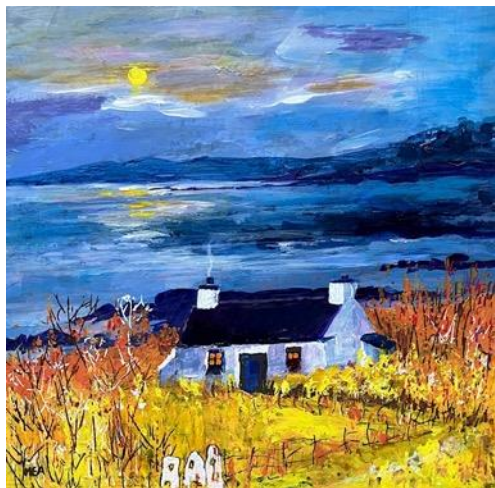
NEW CATHEDRAL STREET

Limited edition print on canvas
94 x79cm
£350

UNITED ROAD

Limited edition print on canvas
94 x79cm
£350

MARY ATHERTON



I am an artist based in South Manchester. My main inspiration is taken from my love of the environment be it at home in my garden or in the mountains or along the coastlines of Wales. Through experimentation, exploration and play I am often drawn towards a more representational approach where I let the paint and materials lead the way. I work mainly in acrylics, inks and mixed media.

I have work in private collections throughout the UK, France, Spain, Greece, South Korea and Thailand.

WHERE THE HEART LIES

Acrylic (framed)
16"x16"
£95

SHOWTIME

Acrylics and inks
on boxed canvas
24" x 24"
£175

BLAZING AZALEAS

Acrylics and inks
on boxed canvas
24" x 24"
£175

MIKE WALDRON



Mike is an expressionist painter born and bred in Manchester. His work reflects his fascination with the liminal space between the urban buzz and its history, and the calm and rugged beauty of the Peak District, where he now lives. Mike believes that his art should go beyond the decorative, to move, provoke and invoke a sense of meaning rooted in time and place.



FISH
Oil & Charcoal
(framed)
£600

THE FIRST GRAMOPHONE ON THE ISLAND
Acrylic
(framed)
£300

OMARA'S STOCKPORT MARKET SATURDAY BREAKFAST
Oil on Board
£350

SATURDAY SHOPPING PICCADILLY 1999
Watercolour on Fabriano
£500

WING CHEUNG



LANDING

This painting shows the moment I arrived in London on the night of January 30, 2010. It marks the start of my new life as an immigrant to the UK. The view from the airplane window, with the city lights shining below, symbolizes the mix of excitement and uncertainty ahead. The blurred lines and glowing orbs in the painting represent the unknown paths we all face, especially when starting over. I wanted the artwork to express the complex emotions that come with such transitions—worry, hope, and acceptance that we can't fully predict the future. Life is an unpredictable journey, but we keep moving forward, guided by the light of possibility



MOTHER.

Portraying a deeply personal moment. My mother, skilled in sewing, crafting the baby carrier that held me in my early years. Her hands, shown weaving red threads, symbolize the care and love that bound us together. My mother worked as a seamstress, and in this piece, her labour represents more than a task; it is her lifelong wish for her children's happiness, sewn into every stitch. The baby carrier she made for me remains with me, even as I moved to the UK, serving as a metaphor for the way her love and hopes continue to support me from afar. Through this painting, I honour her quiet strength and the enduring bond that shapes who I am.

LANDING

Acrylic on canvas
40x50
£50

MOTHER

Acrylic on canvas
30x40
£50

ALISON SCOTT



A screen printer based at Hot Bed Press in Salford and a member of Reveal Printmakers Collective. Selected for the Royal Academy Summer Exhibition.

'My subject is always people. I enjoy the connection that it gives me to draw them and share human interaction by making pictures. The scenes I have chosen for this exhibition are all local.'



RED DOG BLUE DOG

Screen print
68 x 44cm
Framed
£240

RECLAIM THE STREETS

Screen print
34x54cm
Framed
£240

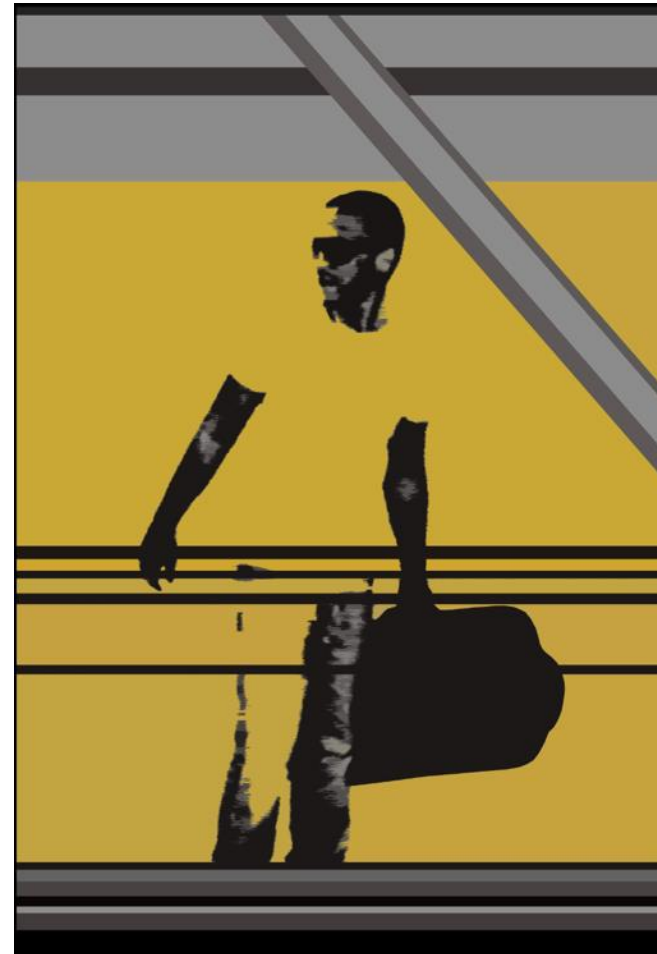
ABOUT TOWN

Screen print
A3
Framed
£220

LE CHAT BLANC

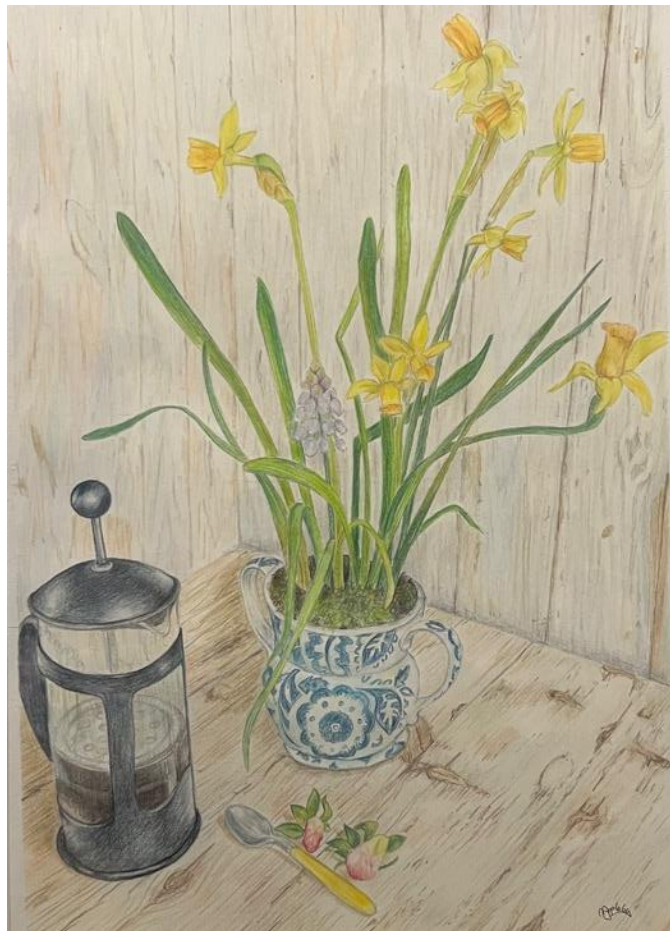
I have always immersed myself in the creative world, my passions being 2D visual arts and music. Illustration became a huge strength of mine during my studies, and I went on to win The Northern Design Award for Illustration (based in Leeds) for a piece of work I produced judged by Wayne Hemingway and Russell Mills. I have built up a portfolio of commercial design work, alongside which I have always continued to develop my own illustration pieces for galleries and exhibitions.

I am always looking for new and exciting opportunities which challenge my design and illustration expertise. I particularly enjoy working to deadlines and having to think fast and welcome projects which test my innovation. During my time working in the arts, I have developed excellent people skills which means I am confident working within a team or individually in a creative environment. I believe you can develop all the skills in the world, but my advice is work on your thought process just as much. Sometimes all the development can be done in your mind, and the execution can be a simple thought-provoking image. I personally have a very fine art thinking process, but my execution is all digital now. Over the years I have explored and combined many different methods and practices.



SPACE & TIME
Digital Illustration
A3 framed
£135

NICOLA APPLEBY



WAITING
Pencil on Paper
A3 Framed
£140

AFTER BREAKFAST COFFEE & STRAWBERRIES
Pencil on Paper
A3 Framed
£140

CAROL ROGERSON



Manchester based and Lancashire raised, northern architecture and landscape inspire my work, a potent mix of both the industrial and the contemporary.

My pieces are created using red stoneware and embossed with rich, natural colours achieved through gas reduction firing.



VARIOUS IN CABINET

- | | |
|--------|---------|
| 1. £48 | 7.£36 |
| 2. £48 | 8.£80 |
| 3. £40 | 9. £35 |
| 4. £52 | 10.72 |
| 5. £46 | 11.£112 |
| 6. £45 | |

CAZ LATHAM



Caz Latham is an original artist and illustrator currently based in Stockport. She loves to capture the colour, diversity and character of everyday life in the North-West via urban landscapes, portraits and still life. She is drawn particularly to celebrating the truth, beauty and charm of the mundane.

Working in several mediums; primarily acrylic for painted works and fine point & felt tip pens for drawings. She is largely self-taught with no formal training and fits her art practice around her full-time day job.

Caz's work has been exhibited several times across the North, has seen her triumph in art competitions, and will feature in Bloomsbury's upcoming "Manchester Art Book", due for release in June 2025. She has appeared (briefly!) on TV as well as had work featured in a global ad campaign for Amazon Music.

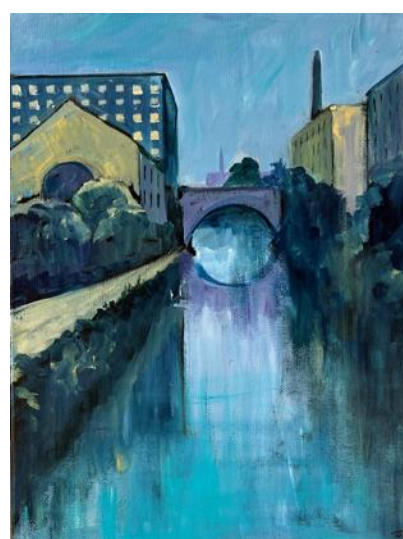
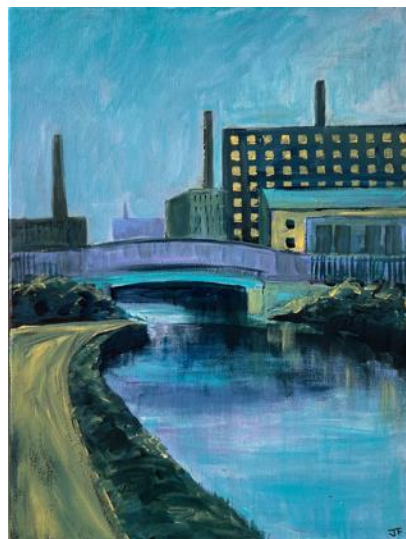
BOARDED UP ON BLOOM STREET
Acrylic on canvas 16"x12"
(framed)
£375

VIEW FROM ALTRINCHAM STREET
Acrylic on canvas 30x40cm
£375

**THE TEXTILE MERCHANT,
RICHMOND STREET**
Oil on canvas panel 10"x12"
(framed)
£375

VIEW FROM BURY ART MUSEUM
Acrylic on canvas
30x40cm
£375

JANE FRASER



Altrincham-based artist with a passion for portraying the joy, colour and light in the world around us. Inspired by urban landscape Jane searches out unusual views and quirky corners of Northern cities, especially Manchester.

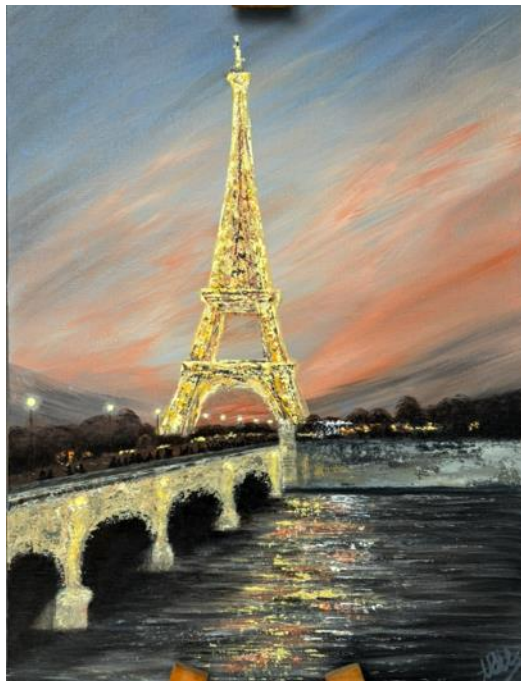
‘My work is mainly acrylics and oils, but includes collages made from my own Gelli printed papers. My current obsession with mills, canals, and the Northern skyline is reflected in this exhibition.

MILLS ON THE HILLS
Collage and Acrylic on Canvas
40x40cm
(framed)
£165

CANALSIDE DREAMS
Acrylic on Canvas
30x40cm
(framed)
£90

CANALSIDE BLUES
Acrylic on Canvas
30x40cm
(framed)
£90

ANN MARIE RICHARDSON



Ann-Marie is a self-taught artist and keen photographer, living and working in Altrincham. Her passion is painting landscapes using layers of acrylics on a canvas board. Inspired from moments in time.

ONE DAY IN PARIS

Acrylic on Canvas
12x16"
£195

NOTTING HILL MEWS

Acrylic on Canvas
12x16"
£190

CATHERINE SHORT



'As a part- retired nurse, I now have time to focus on creating colourful works of art, using a variety of mediums. Creativity brings me peace and joy.

TOAST ON ALTRINCHAM
Watercolour, A3
£175

BRICKLAYERS ARMS
Watercolour, A3
£175

LOCK KEEPERS COTTAGE LOCK 92
Watercolour, A3
£175

SUNSET OVER WEST SHORE LLANDUDNO
Watercolour, A3
£175

JANE FRASER



Altrincham-based artist with a passion for portraying the joy, colour and light in the world around us .

'My work is mainly acrylics and oils, but includes collages made from my own Gelli printed papers.

My current obsession with mills, canals, and the Northern skyline is reflected in this exhibition as is a fascination for the mini-landscapes we find in the smallest patch of meadow and garden, rendered in collage and acrylic.'

COTTAGE GARDEN
Collage and Acrylic on Board
10x10cm
(framed)
£20

DAISY MEADOW
Acrylic on Canvas
40x40cm
(framed)
£49

ORCHID MEADOW
Acrylic on Canvas
40x40cm
(framed)
£49

POPPY FIELD
Collage & Acrylic on Board
Framed
10x10cm
£20

HELEN LUNN



I am a cyanotype artist using the Victorian camera-less photographic process to create my art. The cyanotype (sun-print) process was invented in 1842 by Sir John Herschel who coined the phrase, "photography", "drawing with light". UV sensitive solution is painted on to paper. Botanicals laid on top and exposed to the light. A silhouette image is created. Rinsed in plain water the image is fixed.

My inspiration comes from local plants and weeds exploiting their unexpected beauty. I also add elements such as rust, vinegar, soap to the chemistry to create more abstract and painterly results. My framed work is mounted on wooden panels and finished with encaustic wax. The encaustic wax is painted in many layers, over my cyanotypes fusing each layer with heat. Encaustic paintings do not have to be varnished or protected by glass.

My work will happily sit on your walls as any other piece of art for many years to come.

ROSEBAY WILLOWHERB1

Cyanotype on paper mounted on wooden cradleboard. Layered with encaustic wax. Mounted in a timber frame
40 x 40cm
£200

SUMMER

Cyanotype on cotton mounted padded cushion on board
Box framed
30 x 30cm
£150

MEADOWS EDGE

Cyanotype on cotton mounted padded cushion on board.
Box framed.
30 x 30cm
£150

EMILY EMBERS



As an artist, I often pull inspiration from the inner workings of my brain. The vivid world in which my imagination, inner thoughts and running narrative are both a blessing and a curse to my place in this world. A constant feeling of contradiction runs like a river through my mind and resonates through my paintings.

I have named this specific piece; A sense of ambiguity.

I wanted to highlight the struggles many people have to find a sense of place within this world.

Whether that be through displacement, isolation, mental health battles, neurodivergence or lack of community; the list of reasons why a sense of place feels unattainable to many is endless.

Personally, the daily battle to find my place within the world as a neurodivergent individual weighs heavy, but not hopeless.

Whatever someone's elephant in the room, I wanted it to finally feel a sense of visibility, cohesion and commitment to creating a better understanding of everyone's inclusion needs.

I wanted the elephant in the room to finally feel seen, spoken about and understood.

A SENSE ON AMBIGUITY

Acrylic
52x62cm
£425

JANE EDEN



I'm a pastel artists creating paintings to bring peace and tranquillity in landscape and seascape



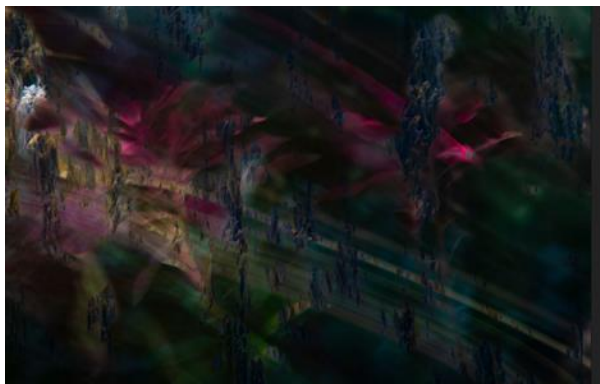
GLOWING MEADOW

Soft Pastel
34 x 34cm framed
£75

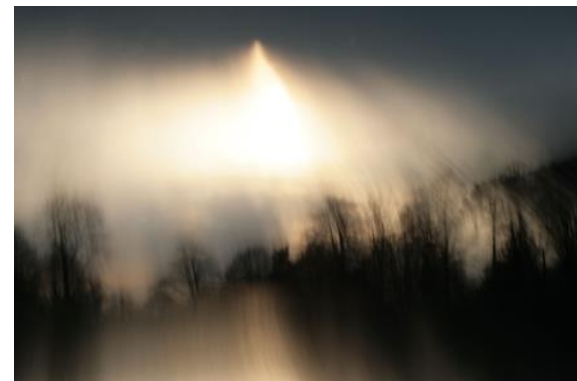
PEACEFUL DUNES

Soft Pastel
34 x 34cm framed
£75

ALLISDHAIR MCNAULL



1



A self-taught photographer with a fascination of how we perceive the world around us, Allisdhair has developed his approach to photography to produce stunning, thoughtful images of what he sees. Each piece is a blending of light, colour, movement creating a new vision of the subject, a mindful meditation of time and place, infinite moments captured forever but never to be repeated.

Allisdhair is an active member of the Cheshire Artists Network and has had several successful exhibitions throughout the Northwest of England and as far afield as Italy.

HALF REMEMBERED DREAMS

Photography & Digital Art
printed on aluminium
£180.00 each

SAFE HAVEN

Photography & Digital Art
Printed on aluminium
60x40cm
£180.00 each

REWILDING

Photography
Printed on aluminium
45x30cm
£150.00

WEEPING TWILIGHT

Photography
Framed
85x60cm
£175.00

JANE DOUGLAS



I have been knife painting in oils for many years and am very conscious of capturing the rich colours of nature and the intrinsic patterns in sea and landscapes.

More recently I have tried to develop my approach to painting into expressing my turmoil on environmental catastrophies and war. A recent painting entitled 'Gaza's despair' was used by the UN on a billboard outside a courtroom.

NORTHUMBERLAND SANDS

Oil on Canvas

64x44

£200

VIEW FROM PENNINE WAY

Oil on Canvas

70x54

£240

SEASCAPE IN PORTMEIRION

57x47

Oil on Canvas

£240

RICHARD COURBALLY



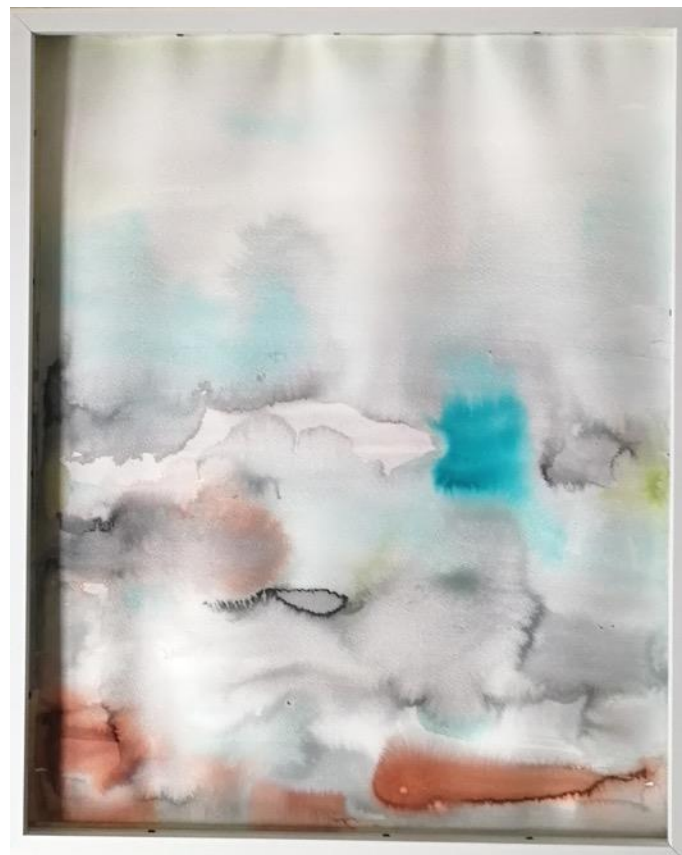
I live and work in Manchester. My paintings are created using oils, and experiment with texture and mark making directly onto the canvas.

LOUGHRIGG
oil on canvas
12x16
£ XXX

YOKO ISAMI



Working with Acrylic Inks and colours. Yoko experiments with colour to depict emotion and a sense of place.



WALK IN THE WOODS

Ink on paper
(framed)
£120

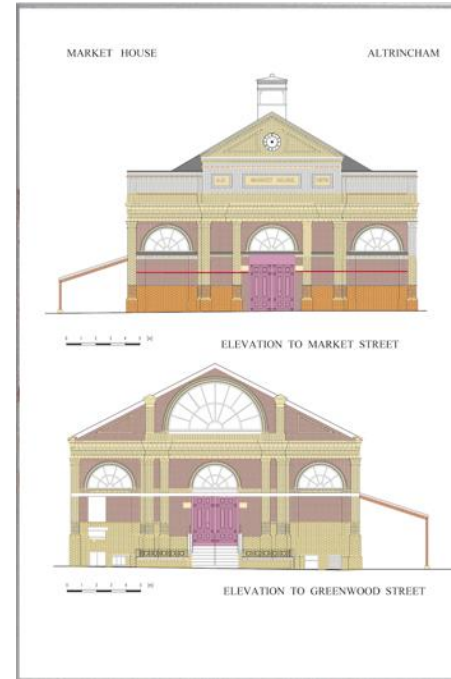
IN THE MIST

Ink on paper
(framed)
£120

MICHAEL GRICE



Accomplished local artist and ex architect. Michael captures the detail on iconic local buildings



DEANSGATE JUNCTION
acrylic on board
81cm x 61cm
£ 250

ALTRINCHAM CLOCK TOWER
print
A4 frame
£35

MARKET HALL ALTRINCHAM
print
A4 in A3 frame
£50

BECKY ATHERTON



Using a surrealist /fantasy style I want to challenge the materialistic patriarchal society we live in, by providing an alternative. The intent is to encourage people to think beyond the limits of religion, domestic lives, money, and wealth and explore stories and other possibilities and ways of being and thinking. I want to visually intermingle female mythological characters with modern day and historical scenario's, issues such as the Pendle witch trials, Suffrage, Me Too movement. I also want my work to have a strong connection with the natural world.

My painting Why would a woman want to be a fox depicts a woman dressed as a fox living in a forest. It represents a state of being either physically or mentally, being in tune with your baseline animalistic intuitive feeling .As with the fox being shrewd, clever and aware of your surroundings.

WHY WOULD A WOMAN WANT TO BE A FOX

152x101cm

Acrylic

£400.00

CHARLOTTE TURNER



INSIDE LOOKING OUT, OUTSIDE LOOKING IN

Through my art I've explored the effects and feelings of mental health and social pressures, exploring them through different mediums to express the emotions causing and caused by thoughts.
display only

KEARON MELLOR



Whilst having a brain tumour removed Dagma Turner played the violin the whole time to make sure that non of her fine motor skills were affected. The surgery was a success. I thought it was very beautiful as it's a room full of people dedicated to their craft and they all help others though the joy of music or by making them better.



A nightmareish portrait depicts venues flytraps holding a human head. The red and green are bold and attention grabbing.

People often describe day dreaming as having your head in the clouds, therefore you could describe overly fixating on your anxieties as having your head in the plants

DAGMA TURNER
£500

FLYTRAP
£200

SAV GOLDMAN



A multidisciplinary creator that works around the themes of satire, the ordinary every day, juxtapositions, internet culture, gender and irony. Interested in dada and Fluxus and nonsense.

'I take societal norms and subvert them, because society is a contradiction. I like making a joke or a gag within my work. To play and tease the viewer on their 'perception' of what art is. The concept of the piece is more important to me. I want to leave the viewer perplexed and surprised, pondering why. Why does that exist and why am I being made to look at it. '

LEVITATING LOO ROLL
Installation
display only

NEDRA DAVIS



Local Artist based at Inch Arts, Nedra picked up the art bug after raising her family and took a foundation degree in fine art. She has a growing collection of in progress and completed works. She can be found at Inch most days. Tap on her studio door to say hello.

**ENTRANCE TO
THE UNIVERSE**
Acrylic on Canvas
£40

VICKY FLOOD



My work tends to be a combination of found and reused materials and older works.

My current place in life is a mix of frustration, confusion and happiness with a need to stitch something to something.

SHOUTING GIVE US SOME PEACE FFS

Cross Stitch Banner, Fabric, Thread,
Bamboo
12x16"
£100